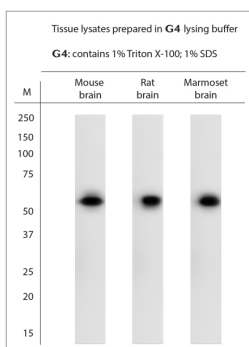


Rabbit antibody to STAM1, 2

Code	OSS00085W
ID Tag	Rb673-060908-WS
Unit size	100 µl
Immunogen	A synthetic peptide from human STAM 1, 2 (STAM-1, STAM-2) conjugated to blue carrier protein was used as the antigen. The peptide is homologous in many species including rat, mouse, zebra fish and xenopus.
Conjugate	Unconjugated antibody
Also known	STAM1, STAM-1, STAM2, STAM-2, Signal transducing adapter molecule 1, Signal transducing adapter molecule 2, HBP, Hrs-binding protein
Host	NZ white rabbit
Purity	Whole serum
Clonality	Polyclonal
Isotype	Polyclonal, whole serum
Applications	IHC, WB. A dilution of 1: 5000 is recommended. The optimal dilution should be determined by the end user.
Specificity	Specific for STAM1 & 2.
Spcs X-react.	Human, rat, mouse, marmoset. Other species not yet tested.
Format	Lyophilised
Reconstitution	Reconstitute in 100 µl of sterile water. Centrifuge to remove any insoluble material.
Storage	Maintain the lyophilised/reconstituted antibodies frozen at -20°C for long term storage and refrigerated at 2-8°C for a shorter term. When reconstituting, glycerol (1:1) may be added for an additional stability. Avoid freeze and thaw cycles.
Expiry Date	12 months after reconstitution
Shipping	This item will be shipped to you at ambient temperature in a lyophilised form.
Limitation	For research use only



WB on brain tissue lysates. Blocking: 1% LFDM for 30 min at RT; primary antibody: dilution 1:4000 incubated at 4°C overnight. Click on eLAB BOOK tab to see the details.

Related Products

OSS00106G Rabbit antibody to STAM 1, 2