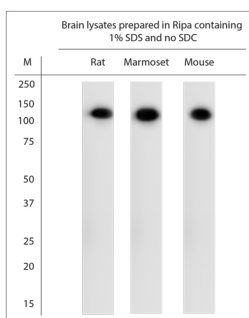


Rabbit antibody to ATP1A1

Code	OSA00056W
ID Tag	Rb1441-120610-WS
Unit size	100 µl
Immunogen	A synthetic peptide from mouse ATP1A1 conjugated to blue carrier protein was used as the antigen. The peptide is homologous in rat and human.
Conjugate	Unconjugated antibody
Also known	AT1A1, Sodium/potassium-transporting ATPase subunit alpha-1, Sodium pump subunit alpha-1, Na(+)/K(+) ATPase alpha-1 subunit, Atp1a1
Host	NZ white rabbit
Purity	Whole serum
Clonality	Polyclonal
Isotype	Polyclonal, whole serum
Applications	IHC, WB. A dilution of 1 : 25000 is recommended for WB and 1:10000 for IHC-P. The optimal dilution should be determined by the end user. Not yet tested in other applications. Recommended tissue lysing buffer: Ripa, containing 1% SDS but no SDC.
Specificity	Specific for Na ⁺ /K ⁺ -ATPase alpha 1 subunit.
Spcs X-react.	Mouse, rat, human, marmoset. Other species not yet tested.
Format	Lyophilised
Reconstitution	Reconstitute in 100 µl of sterile water. Centrifuge to remove any insoluble material.
Storage	Maintain the lyophilised/reconstituted antibodies frozen at -20°C for long term storage and refrigerated at 2-8°C for a shorter term. When reconstituting, glycerol (1:1) may be added for an additional stability. Avoid freeze and thaw cycles.
Expiry Date	12 months after reconstitution
Shipping	This item will be shipped to you at ambient temperature in a lyophilised form.
Limitation	For research use only



WB on brain lysates. Blocking: 1% LFDM for 30 min at RT; primary antibody: dilution 1:25000 incubated at 4°C overnight. Click on eLAB BOOK tab to see the details.