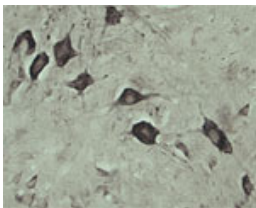


## Rabbit antibody to internal part of Vacuolar protein sorting-associated protein 45 (rvps45, Vps45, Vps45a): IgG

<b>Code</b>	OSV00017G
<b>ID Tag</b>	Rb451-150608-G
<b>Unit size</b>	500 µg
<b>Immunogen</b>	A synthetic peptide from the internal part of rat Vacuolar protein sorting-associated protein 45 (rvps45, Vps45, Vps45a) conjugated to an immunogenic carrier protein was used as the immunogen. The immunogen is homologous with the corresponding sequence in mouse.
<b>Conjugate</b>	Unconjugated antibody
<b>Also known as</b>	Vps45, VPS45, rvps45, Vps45a
<b>Host</b>	NZ white rabbit
<b>Purity</b>	IgG
<b>Clonality</b>	Polyclonal
<b>Isotype</b>	Polyclonal, IgG
<b>Applications</b>	IHC, WB. A concentration of 10-50 µg/ml is recommended. The optimal concentration should be determined by the end user.
<b>Specificity</b>	Specific for VPS45.
<b>Spcs X-react.</b>	Rat, mouse. Other species not yet tested.
<b>Format</b>	Lyophilised
<b>Reconstitution</b>	Reconstitute in 500 µl of sterile water. Centrifuge to remove any insoluble material.
<b>Storage</b>	Maintain the lyophilised/reconstituted antibodies frozen at -20°C for long term storage and refrigerated at 2-8°C for a shorter term. When reconstituting, glycerol (1:1) may be added for an additional stability. Avoid freeze and thaw cycles.
<b>Expiry Date</b>	12 months after reconstitution
<b>Transportation</b>	This item will be shipped to you at ambient temperature in a lyophilised form.
<b>Limitation</b>	For research use only



IHC on rat spinal cord using Rabbit antibody to internal part of Vacuolar protein sorting-associated protein 45 (rvps45, Vps45, Vps45a): IgG (OSV00017G) at a concentration of 10 µg/ml. Pre-absorption of the antibody with the immunising peptide completely abolishes the immunostaining (not shown).

---

### Associated Products

OSV00016W Rabbit antibody to internal part of Vacuolar protein sorting-associated protein 45 (rvps45, Vps45, Vps45a): whole serum